

DENVER™

Instruction Manual



Seating Matters™

This Instruction Manual is frequently updated to ensure safe use of your product. Visit www.seatingmatters.com where you can find a free copy of the most up to date version.

CONTENTS

- 2. Safety Instructions
- 4. Technical Specification
- 5. Operating Instructions
- 9. Cleaning & Maintenance of Fabric
- 10. Recycling Policy
- 11. Intellectual Property
- 11. Maintenance and Servicing

SAFETY INSTRUCTIONS

All instructions must be read and understood before the product may be used.

Terminologies

Patient: The person sitting in the chair.

Care Giver: Competent person with responsibility for the persons sitting in the chair as well as the suitability of the equipment for the Patient. The care giver is responsible for checking the chair for faults during the course of its use.

The DENVER™ is CE marked to show conformance to the Medical Devices Directive 93/42/EEC and conforms to BS ISO 7176 at medium hazard.

Assembly, Installation, Warnings & Hazards.

1. This chair should be fully assembled, all fixings secured and the chair checked for safety by a competent person before use.
2. The care giver must ensure that the product is in good condition before use (check all nuts and bolts are fastened, fabric in good condition etc). If there are any problems, these must be reported to your Seating Matters provider and corrected before the chair is put into use.
3. Keep all body parts away from the mechanisms under the chair. Repairs and maintenance should only be carried out by fully trained technicians.
4. Pressure ulcer or pressure injury reduction is not a guarantee with this equipment. The care giver must ensure that the patient has a period out of the chair after prolonged sitting to raise tissue oxygenation levels. Although the chair offers pressure management, the body tissue still needs time to recover. In many places, local or national guidelines recommend a maximum of 2 hours sitting at any one time. You must also observe patient specific recommendations and guidelines as set by their health professional with regard to the use of tilt and recline for appropriate pressure management.
5. The product may not be left in an outdoor environment. More information on fabrics and their environment can be found later in this manual (pg 10).
6. A competent person, trained in the use of the chair, should make adjustments and

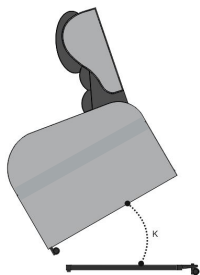
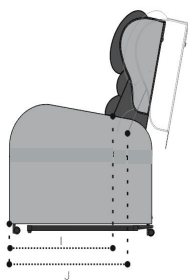
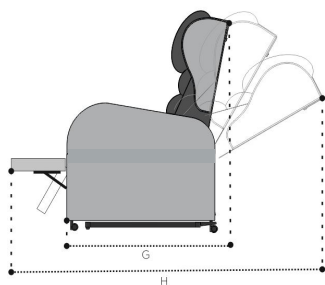
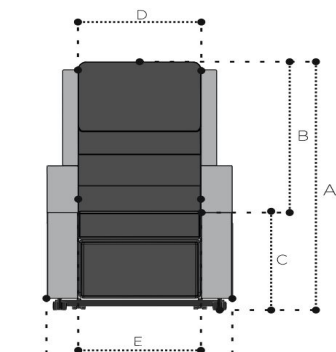
set it up according to the care giver requirements and patient dimensions before the patient sits in the chair. Where possible, adjustments should be made when the patient is not in the chair to avoid injury to the care giver and patient.

7. Ensure there is more than one competent person there when making adjustments to ensure they are correct and safe for the patient.
8. Under no circumstances must the care giver or patient stand or sit on the leg rest of the chair.
9. This chair should not be moved whilst a patient is seated in the chair. Castors are for chair transport only.
10. This product should not be lifted at any time unless by competent persons trained in such manual handling.
11. When operating the leg rest and recline features on the chair please ensure there is a 450mm gap around the chair to prevent the back or leg rest coming into contact with a wall or any other object.
12. The chair needs to be plugged into a mains power outlet at all times in order to be used.

Please call your Seating Matters provider or contact Seating Matters direct at **technical@seatingmatters.com** if you have any questions on these points.

DENVER™

TECHNICAL SPECIFICATION



Motor Functions

Dual Motor	Back Recline, Leg Rest Elevation & Rise Function
Single Motor	Fixed Back Angle, Leg Rest Elevation & Rise Function

Seat Height

C	16"/400mm (3" Seat Cushion*)
	18"/450mm (Standard)
	20"/500mm (75mm Castors)

Basic Dimensions

A	Overall height	43"/1090mm
B	Back height	27"/690mm
D	Inside back width	20-24"/495-595mm

Seat Width

E (Seat width)	F (Overall widths)
450mm/18in	28"/700mm
500mm/20in	30"/750mm

Seat Depth (Achieved by Adjusting Back Position)

I	Position A	18"/450mm
J	Position B	22"/550mm

Rise Angle

K	Rise Angle	35°
	Tilt in Space Angle	20°

Overall Length

G	32"/800mm
H	23"/1600mm

Chair weight unloaded is 10.56 Stone/57 Kg/125.6 lb.
Max user weight limit is 21.5 Stone/136.5 Kg/301 lb.

*Please note when adapting cushion thickness arm height will be affected.

Contact technical@seatingmatters.com for further information.

OPERATING INSTRUCTIONS

A competent person, trained in the use of the chair, should make adjustments and set it up according to the care giver requirements and patient dimensions before the patient sits in the chair. Ensure there is more than one competent person present when making adjustments to ensure they are correct and safe. Ensure all fixings are secure before allowing the person to sit in the chair, this includes lateral supports and seat adjustments. Please call your Seating Matters provider if you have any questions on these points.

- **Braking Castors (20"/500mm Seat Height Only):**

If the chair is used on a plane or hard surface with the brakes engaged to ensure stability and to avoid the device moving undesirably during use. Braking castors, where provided, must be in the braked position while in use.

- **Back Angle Recline:**

To recline the back of the chair, use the buttons on the handheld remote to move the back of the chair slowly until it is in the required position. Exercise care in case of injury to the patient or damage to the surrounding environment.

- **Rise Function:**

Using the handset adjust the seat angle to a desired position. The seat will rise which will assist the patient to a standing position. The patient should be encouraged to use their armrests during this elevation for stability and balance.

- **Leg Elevation:**

Using the handset, elevate the legrest to the desired position.

- **Chair Movement:**

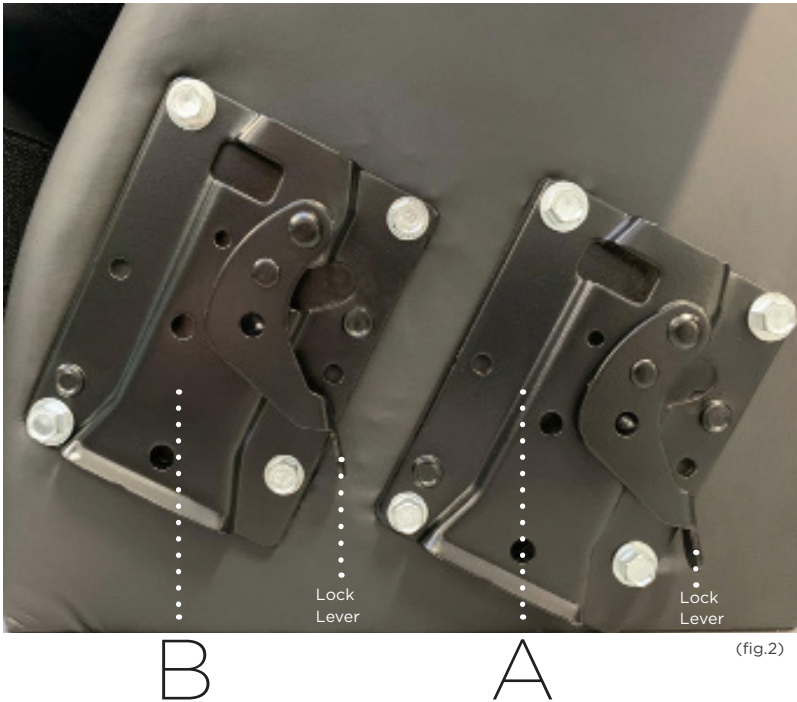
To move the chair around, ensure the brakes are disengaged and push the chair in the desired direction. Only a competent person should move this chair.

- **Seat Depth Adjustment:**

Changing the seat depth is achieved through moving the back position.

To adjust the seat depth stand at the back of the chair and lift the lock levers at the base of the backrest. Lift the back from it's hinges. Place the back into the desired position (fig. 2). Position A is the standard position.

Please note: Do not attempt to adjust the seat depth while the patient is in the chair.



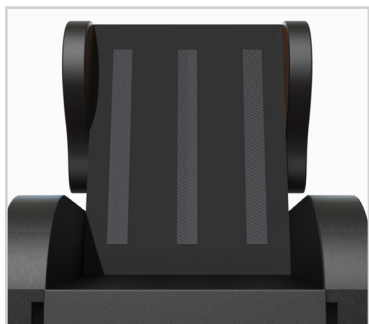
- **Configurable Back Options (if requested):**
Back cushions can be reconfigured to change from a horizontal position (fig 3.a) to a vertical position (fig 3.b) using the velcro on the front of the backrest. (fig 3.c).
- **Lateral Supports:**
Lateral supports can be purchased separately as additional side support. To add lateral supports, insert the silver tube, with lateral pads to the front of the chair, into the lateral support bracket on the backrest and tighten the wing screws. (fig 3.d).



(fig.3.a)



(fig.3.b)



(fig.3.c)



(fig.3.d)

- **Stand Transfers:**
Ensure transfer area is clear of hazards before allowing the patient to get on or off the chair. Ensure the braking castors are engaged (20"/500mm seat height only) for stability and safety. The back recline and rise angle must be in a safe position before the patient can perform the stand transfer or engage the rise function.
- **Rise Transfer:**
Using the handset, adjust the back recline and seat angle to a desired position. The seat will elevate which will assist the patient to a standing position. The patient should be encouraged to use their armrests during this elevation for stability and balance.
- **Handset:**
The rise angle and back angle recline functions are controlled by the electric handset, simply push the button to operate the corresponding function.

Single Motor:
Leg Rest &
Rise Angle
Adjustment



Dual Motor:
Back Angle, Leg
Rest & Recline
Adjustment



- **Powering your chair:**
The chair must be plugged into the mains at all times. In the case of a power outage, there are two 9V batteries located in the control box for backup power. They are not meant to be used for a prolonged period and the chair will operate slower when powered solely by internal batteries.

CLEANING & MAINTENANCE OF FABRIC

Non-absorbent, anti-bacterial, flame retardant, strong, durable material for outer arms, outside back etc.

Vinyl is resistant to urine, most household stains, mild acids/alkalis, drinks and beverages as they are not absorbed by the vinyl and can be wiped off without any problem or lasting damage. Some difficult substances such as lipstick, ball point pen ink and food colourings should be cleaned off immediately to avoid permanent staining.

- **Cleaning:**

To ensure proper cleaning and longevity of the fabrics, the chairs should be cleaned with warm soapy water followed by a clean water rinse to help retain the attractive appearance and durability. Heavy, ingrained soiling may be removed by scrubbing with a soft brush. Strong detergents, solvent cleaners, polishes or patent chemical cleaners should not be used as they are unnecessary and may cause embrittlement and cracking of the material.

- **Additional Care:**

Special attention should be given to head rest and arm rest areas, as build-up of body oils in these areas will gradually cause the vinyl to harden.

Dartex Multi Stretch Fabric (Patient Contact Surface)

Waterproof, stain resistant, flame retardant, multidirectional stretch fabric for direct contact surfaces – i.e. seat cushion, calf pad, lateral supports and seat back.

- **Properties:**

This fabric is waterproof, can be wiped clean and has biostatic (anti-mycotic) coatings to provide an impenetrable barrier to virus and bacteria. Superficial dirt may be removed by wiping with a soft cloth, moistened with water, containing a neutral detergent. More persistent contamination may be treated by wiping with alcohols or turpentine substitute, followed by hot water and detergent. Routine cleaning and disinfection in situ may be carried out on the coating with hand hot water and a neutral detergent, or with a sodium hypochlorite solution (0.1% or 1000 parts per million available chlorine). The material is compatible with the 10,000ppm available chlorine in solution required for the decontamination of blood spills. Excess solution must be removed and the surface thoroughly rinsed and dried prior to reuse or storage. Proprietary disinfectants may be used, provided manufacturer's instructions are followed. All cleaning agents, and disinfectants, must be thoroughly rinsed off and the item dried before storage. Failure to do this may result in damage to the polyurethane coating, react with the chair frame, or negate the biocompatibility results of the fabric. It is essential that articles be thoroughly dried after all cleaning procedures and before storage.

RECYCLING POLICY

Seating Matters are committed to reducing waste and improving our care for the environment. We aimed to construct our chairs with as many recyclable materials as possible that could be repurposed indefinitely.

The WEEE Directive

The WEEE Directive, 2012/19/EC, urges producers of Electrical and Electronic Equipment (EEE) to provide information on how these products can be treated, reused or recycled.

In order to comply with this directive in the European Union, Seating Matters electrical components are marked with a crossed out wheelee bin. This indicates that the electrical components should be treated in accordance with the WEEE regulations after their useful life.

Advice on Recycling

- Your Seating Matters product may contain batteries which should not be disposed of in household waste.
- Never dispose of the battery in a fire. This may cause an explosion.
- The product may contain substances that could be harmful to the environment.
- Electrical components must be taken to a proper recycling facility.
- Your Seating Matters product contains component parts which can be recycled.
- We thank you for being environmentally responsible and for making efforts to recycle your Seating Matters product at the end of its' safe and useful life.
- Contact your local authority or governmental agency for the regulations that apply in your area.
- If you wish to have Seating Matters recycle your product and your behalf, you are welcome to return the product to our company.



Plastic Components

Many of our plastic components are made from polypropylene and can be recycled as long as they are recycled with other polypropylene resin materials. Polypropylene sheets can be recycled with any other materials that have this symbol.



Regional Variations

The device referred to as a "DENVER™" is a Seating Matters product category and the information included in this document reflects common features of this group of products. In some regions of the world, we supply product design variations of equivalent function and ease-of-use but with alternative specifications or reinforcements.



INTELLECTUAL PROPERTY

Seating Matters are at the forefront of seating research and design, therefore we take the protection of our intellectual property very seriously and have our designs, patents and trademarks protected in many jurisdictions throughout the world.

- The Seating Matters Trademark is registered throughout the European Union and various countries globally.
- Patent Pending: No. GB1915470.7
- US Design Patent: No. 601360S, No. D611718; No. 600932, No. D602704S.
- Australian Design Registration: No. 325536, No. 324011, No. 325537, No. 324012.
- Community Design Registration: No. 001016364-002, No. 000942180-0004, No. 002428813-0001, No. 001016364-001, No. 012673018.
- Canadian Design Registration: No. 130224, No. 128763, No. 130217, No. 128764.

MAINTENANCE AND SERVICING

Regularly servicing your Seating Matters chair will prevent untimely and inconvenient breakdowns, reduce repair costs and extend the chair's life. Damage to the chair can also cause excess strain for the patient and care giver.

Important

Parts can only be changed by service persons trained in Seating Matters products and use only Seating Matters parts. We recommend that your chair is serviced every year by a Seating Matters approved provider for any running repairs and maintenance.

Maintenance

Carry out the following regular checks to ensure the operation and safety of the chair. If you are in any doubt about the functioning of your chair contact your Seating Matters approved provider immediately.

Daily

- Check that the castors are not damaged.
- Check that the castors turn freely.
- Make sure that the castor forks run free and are not bent.
- Check all fabrics for damage or contamination and replace where necessary.

*See cleaning and maintenance of fabrics section in manual for cleaning instructions

Weekly

- Check the castors fittings for hair and dirt etc. which could restrict the castor movement.
- Pick out any such material with tweezers or take the spindle out, clean it and then replace it.
- If it is still not free (one continuous turn without it sticking) contact your Seating Matters approved provider for replacement.

Monthly

- **Castors:** Make sure the top of the castor housing is parallel with the floor. Any variation will cause restricted movement. If it is damaged contact your Seating Matters approved provider for replacement.
- **Mechanisms:** Check all tilting mechanisms are working smoothly, check that all nuts and bolts are present and secure.

Please note: If nuts or bolts need attention, contact your Seating Matters approved provider IMMEDIATELY and DO NOT use the chair until it has been serviced.

- **Leg rests:** Check that all leg rests are easily removed/swung-away and replaced or repositioned easily. Ensure that parts lock in place securely. If parts are not locking try lubricating. If the problem still remains contact your Seating Matters approved provider.
- **Frame:** Check the visible parts of the frame for cracks, splits, large dents or other damage. If you find any of these things do not use. Contact your Seating Matters approved provider immediately.

WE ARE HERE TO HELP

For any questions or queries regarding your Seating Matters chair please contact: contact@seatingmatters.com

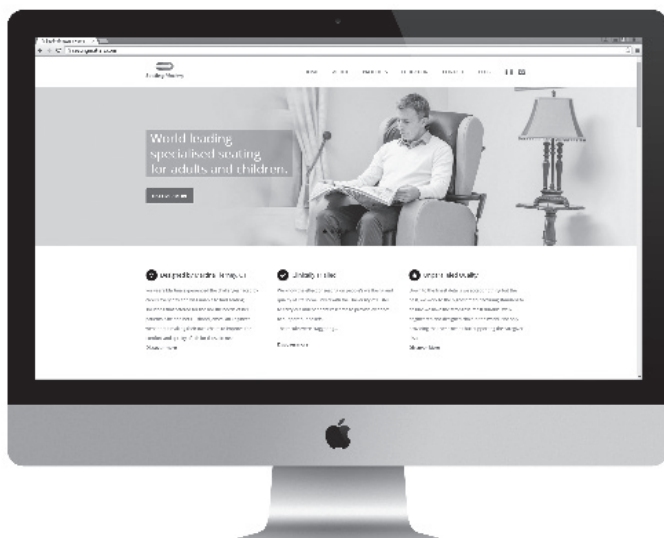


WE ARE HERE TO HELP

For any questions or queries
regarding your Seating Matters
chair please contact:
contact@seatingmatters.com



VIEW OUR FULL RANGE OF CHAIRS & ACCESSORIES ONLINE.



WWW.SEATINGMATTERS.COM



Australia

9/256 New Line Road

Dural

NSW 2158

Australia

Tel: +61 1300 001 050

australia@seatingmatters.com

Canada

269 Maplegrove Rd

Colborne

ON, Canada

K0K 1S0

Tel: +1 (905) 507 9007

canada@seatingmatters.com

USA

300 International Drive

Suite 100

Buffalo, NY 14221

USA

Tel: +1 (315) 466 8973

usa@seatingmatters.com

UK & Europe

131 Carnamuff Road

Limavady

Northern Ireland

BT49 9JG

Tel: +44 (0) 28 777 666 24

Tel: +44 (0) 20 3982 2900

contact@seatingmatters.com



Seating MattersTM

www.seatingmatters.com